



# New Westminster at a **GLANCE**

Between income levels, cost of housing, and cost and availability of child care in our city, many of our 9,700 households with children are experiencing challenges raising their family here.


POPULATION  
**65,976** 

17,290  
HOUSEHOLDS  
**56.1%**   
have **CHILDREN**

Average **INCOME**  
 **\$38,407**  
(BC average = \$39,415)

## HOUSING AFFORDABILITY in New Westminister

Single **detached HOUSE**  
median sale price

 **\$700,000**

Qualifying yearly household  
income to buy a house  
**\$146,148**

**3+bedroom TOWNHOUSE**  
median sale price

**\$500,000** 

Qualifying yearly household pretax  
income to buy a home **\$109,536**

Average monthly rent for  
a **3 bedroom unit:**

**\$1,300** 

Qualifying yearly pretax  
household income to  
rent a unit **\$52,000**

## REFERENCES AND SOURCES

For more information about the research used in the development of this brochure, please check out our website, where we have prepared a special page with all of the links at [www.kidsnewwest.ca/2014-brochure-links](http://www.kidsnewwest.ca/2014-brochure-links)

## ACKNOWLEDGEMENT

This brochure was produced by the Kids New West Child Development Committee, which represents the Early Child Development Committee and the Middle Child Development Committees, with the support of the United Way of the Lower Mainland.



Kids New West also thanks the City of New Westminister for their input on the data and statistics used.

## CONTACT

Email us [info@kidsnewwest.ca](mailto:info@kidsnewwest.ca)  
or visit [www.kidsnewwest.ca](http://www.kidsnewwest.ca)

# Kids New West

Healthy Kids Build Healthy Communities &  
Healthy Communities Build Healthy Kids



If you are reading this brochure, you have the ability to impact New Westminister child development by supporting and advocating for child friendly policies.

**KidsNewWest.ca** connects families in New Westminister with other families, community service providers, information, resources and events. The Kids New West Child Development Committee is comprised of representatives from non-profit organizations serving the community.

## CHILD DEVELOPMENT

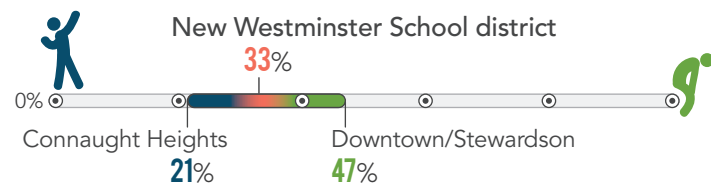
in New Westminster

The Early Development Instrument, Middle Years Development Instrument, and the Heart-Mind Index are research tools which have gathered data on the development of New Westminster children.

### Early Development Instrument

The Early Development Instrument asks New Westminster Kindergarten teachers 104 questions. It is compiled into data waves of 2-3 years. The tool measures vulnerability on five scales: physical health and well-being, social competence, emotional maturity, language and cognitive skills, and communications skills.

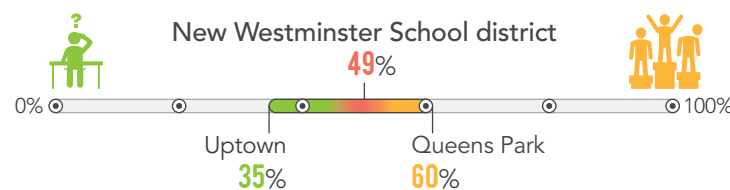
Percentage of Children **VULNERABLE** on One or More Scales



### Middle Years Development Instrument

The Middle Years Development Instrument asks grade four and seven students about their experiences inside and outside of school. It measures the percentage of children thriving in five areas of development including: physical health and well-being, connectedness, social and emotional development, school experiences, and after school time.

Percentage of Children **THRIVING**

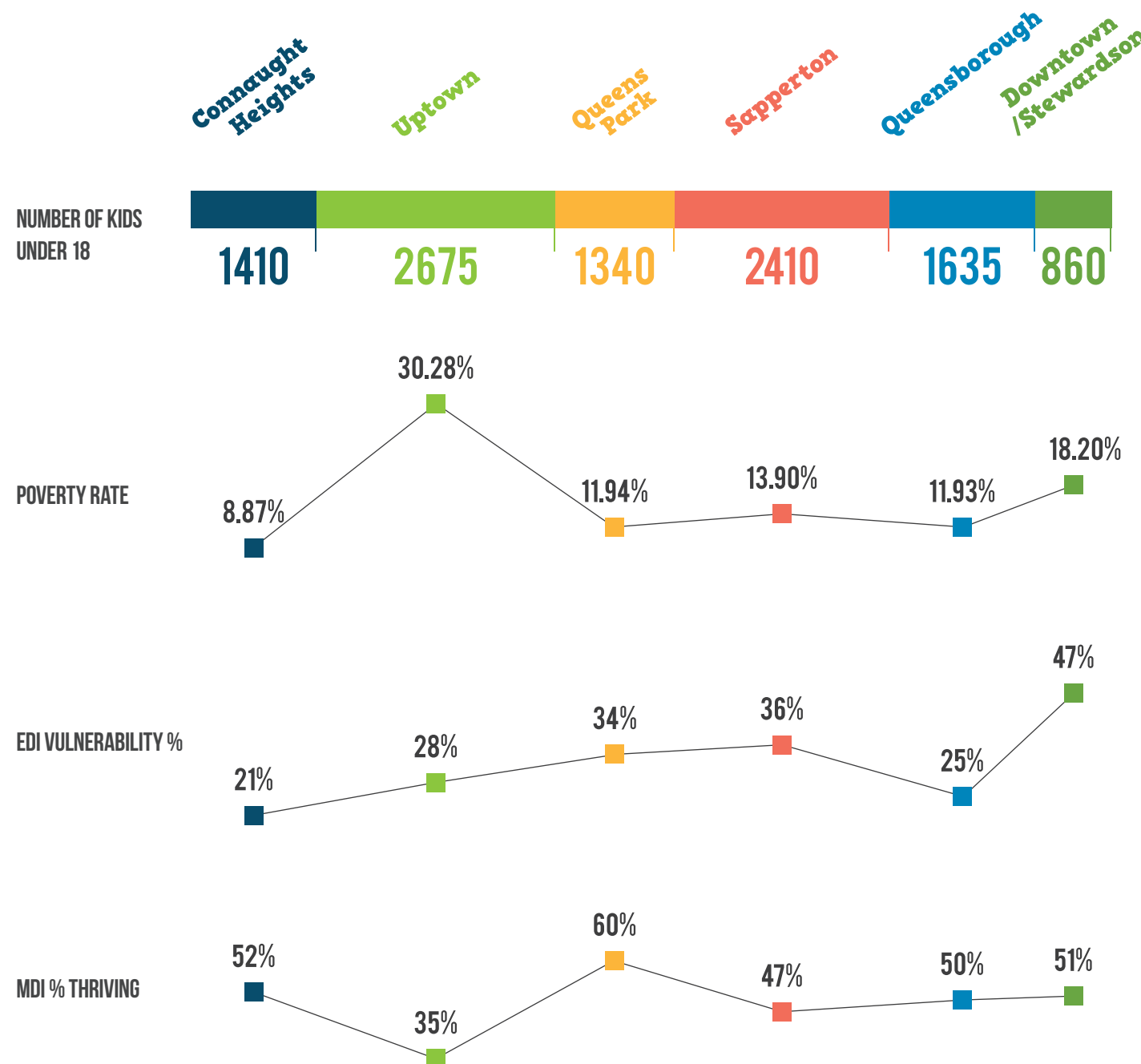
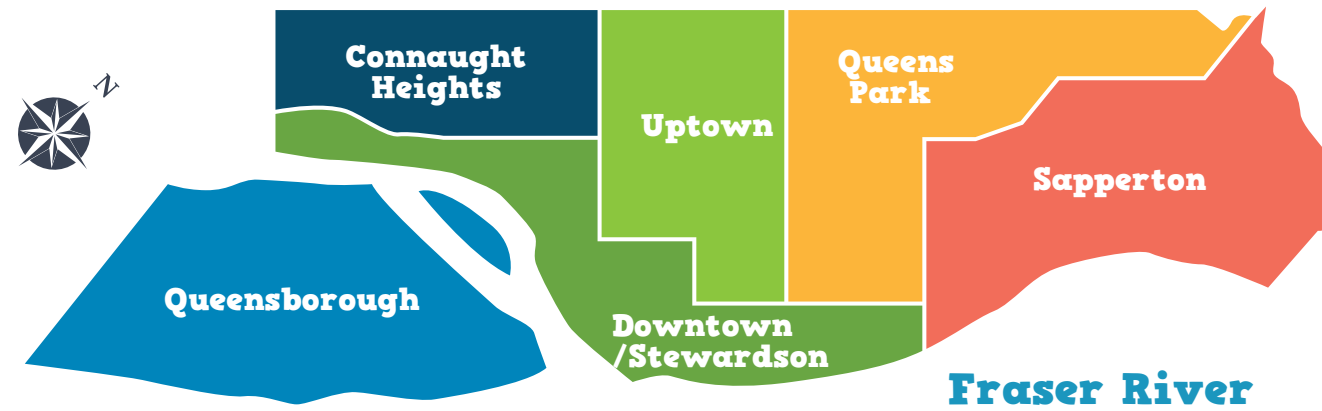
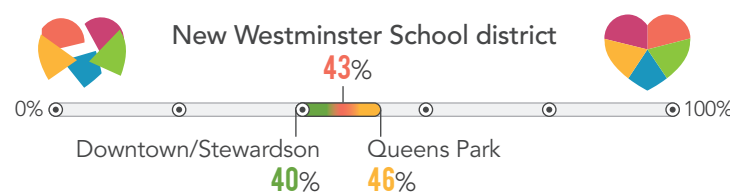


### Heart-Mind Index

Heart-Mind Index measures a balance between social and emotional skills. It considers five positive human qualities:

- Gets Along Well with Other, • Compassionate and Kind, • Solve Problems Peacefully, • Secure and Calm, and • Alert and Engaged.

Average % of Children that Scored High on **ALL 5 MEASURES**



## CHILD POVERTY RATES

in New Westminster

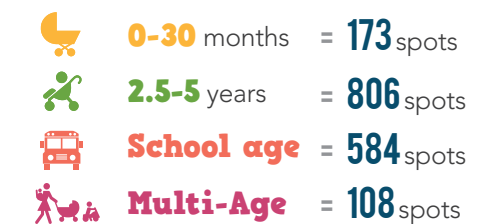
The Low Income Measure is an internationally used measure that states a household income is low if its income is less than half of the median income of all households in an area.



## CHILDCARE AFFORDABILITY

in New Westminster

Approximate total number of spaces per age group



Our city is the 3rd most expensive municipality in the region for infant group childcare. Average cost is \$1140 /month for infant or \$812/month for 3-5 year old group childcare

Only **12.5%** of **Childcare** operators offer **extended hours** (evenings & weekends)



**47%** of parents indicated finding childcare **DIFFICULT** or **VERY DIFFICULT**



In the 2013/14 school year, the district supported:

**330**

Aboriginal students

**877**

English as Additional Language students

**561**

Students with special needs\*

\* This number does not represent non-school aged children, children currently waiting for assessments, and other unidentified children.